

Rittal – The System.

Faster – better – everywhere.

► **Wall mounting
bracket for KL, EB,
BG, AE, CM, EL wall-
mounted enclosures,
TP consoles and
small fibre-optic
distributors – SZ
2433.000**

Date : May 31, 2016

ENCLOSURES

POWER DISTRIBUTION

CLIMATE CONTROL

IT INFRASTRUCTURE

SOFTWARE & SERVICES

FRIEDHELM LOH GROUP



Wall mounting bracket for KL, EB, BG, AE, CM, EL wall-mounted enclosures, TP consoles and small fibre-optic distributors – SZ 2433.000

created : 31.05.2016 build on www.rittal.com/uk-en




Product description

Material:	Stainless steel 1.4301 (AISI 304)
Supply includes:	Assembly parts for mounting on the enclosure.
Packs of:	4 pc(s).
EAN:	4028177022980
Customs tariff number:	83024900
eCl@ss 5.1:	27189234
eCl@ss 7.0:	27182405
ETIM 6.0:	EC002625

Product features

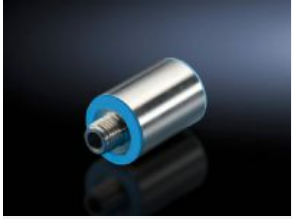
Wall distance:	10 mm
Weight/pack:	0.3 kg

Downloads

Documentation:  [Info sheet \(EN, DE\)](#)

CAD drawings: Request

Please note that there are the following alternative products:



Wall spacer bracket HD

Further information on this product

www.rittal.com/uk-en/Wall_spacer_bracket_HD